



RZR Turbo S Winch Bumper Installation Instructions

Tools Required

T25 Torx Driver

Razor Blade

M15 Socket with ratchet

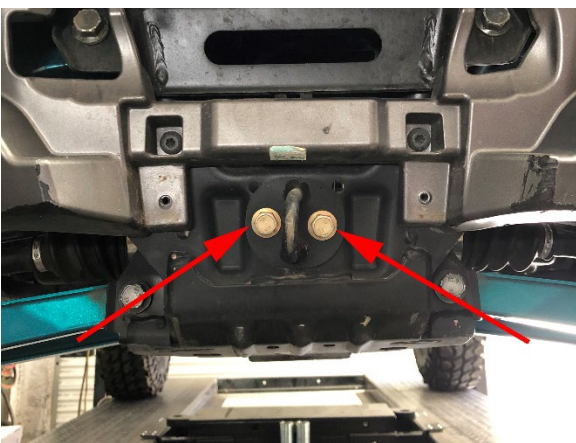
M15 Wrench

M13 Wrench X2

Step 1: Remove the front plastic winch cover by removing the (2) torx screws then lifting upward.



Step 2: Remove the factory tow hook by removing the (2) 15mm bolts. Leave the backing plate in place.



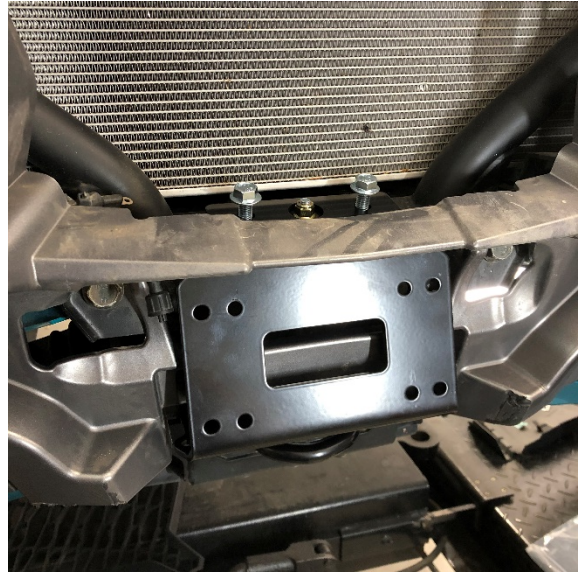
Step 3: Cut off the plastic area where you removed the Torx screws.



Step 4: Remove the grill. Insert the provided backing plate with the (2) welded nuts through the front slot in the frame. Hold it in place by inserting the provided M8 carriage bolt upward through the plate and through the center hole in the frame. Put the provided M8 nylock nut on the carriage bolt. Tighten the nut most of the way. You should still be able to move the backing plate some.



Step 5: Set the winch mounting plate in place. The center bolt should hold it in place or you can use (2) of the provided M10 bolts partially threaded in. Then hold up your winch on the plate to verify fitment and clearance. Ensure your power posts clear the plastics. Some winches may need to have the end cap rotated. Most winches have multiple angles the end cap can be bolted on. If you need to rotate the end cap, simply remove the (2) bolts in the end of the winch. Keeping slight pressure on the end cap, rotate until you can insert the bolts into the next set of threads. Test fit the winch again.

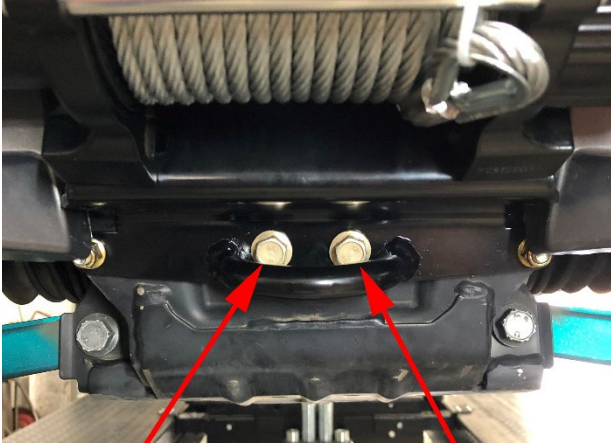


Step 6: Remove the winch mounting plate. Install the winch on the mounting plate with the hardware that comes with your winch.





Step 7: Set the winch mounting plate back on the RZR. Reuse the (2) M10 bolts you removed from the factory tow hook. They will be inserted behind the new tow hook. You may need to reach one hand between the frame and differential to hold the backing plate in place while you thread in the bolts. Snug the bolts with an open end wrench but don't tighten.

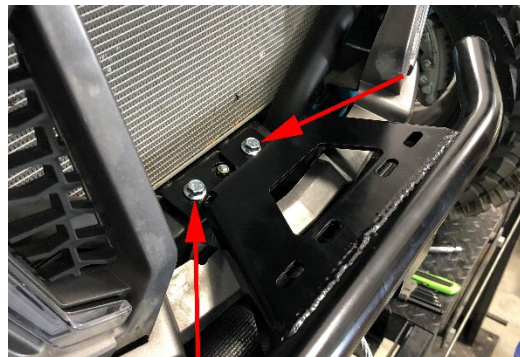


Step 8: Insert (2) M8 bolts with nylock nuts in the outside holes. You may need to clearance your plastic more depending on how much you cut off in Step 3. Snug the bolts and nuts.

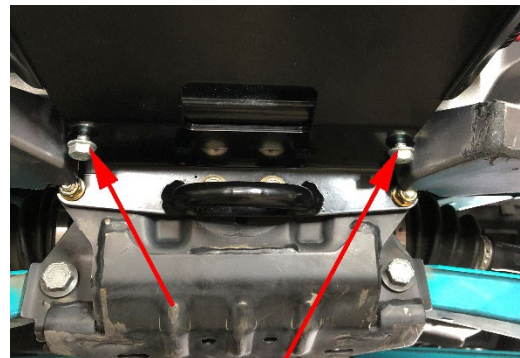


Step 9: Verify your winch rope is wrapped so it goes out the top half of the drum. If it is going out the bottom, you can free spool your rope all the way out. Most winches have a set screw holding the end of the rope. Loosen the set screw and remove the rope. Reinsert the rope in the opposite direction so the rope will winch in into the top half of the drum. Tighten the set screw.

Step 10: Insert the winch rope through the slot in the outer bumper. Install the bumper over the winch mounting plate. Insert the (2) M10 bolts through the bumper, through the winch mounting plate, into the backing plate in the frame.



Step 11: Install the remaining (2) M8 bolts and nylock nuts through the bottom two holes. Then tighten all hardware previously installed.





Step 12: Reinstall the grill. Install the fairlead using the hardware provided with your winch. Install the wiring and the rest of your winch accessories according to the instructions that came with your winch. Since you are now using the winch line through the top of the drum, you may need to reverse the direction of your wiring. You can either reverse the wires on the winch itself, switch them on your winch contactor solenoid, or reverse them on the winch switch.



Note: Some fairleads may need to have the holes enlarged or moved to bolt onto the bumper. The badlands roller fairlead shown needed to have the holes slotted $\frac{1}{2}$ the diameter of the existing holes.