



Thank you for ordering Rock Ready UTV seat bases! If you have any questions email sales@rockreadyutv.com or call/text (530) 492-0429. PDF and Video instructions are on our website at <https://rockreadyutv.com/product-help/>.

Gen 4 Adjustable Lowering and Reclining Seat Bases

Tools Required

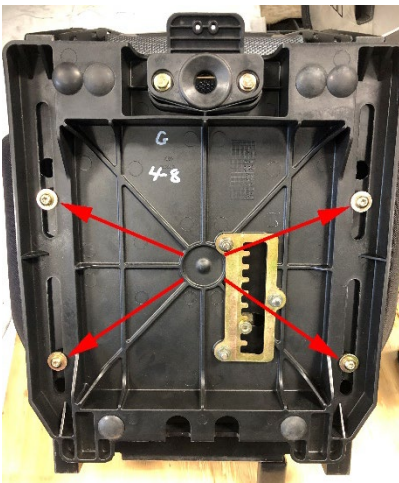
T27 Torx driver

7/16 wrench

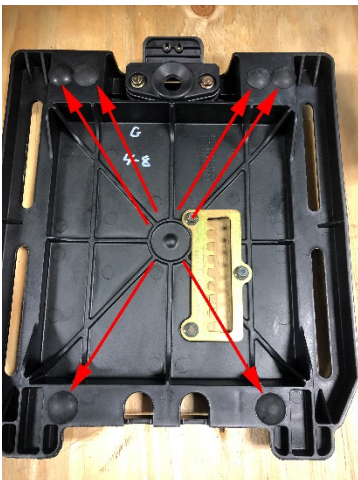
10mm socket OR wrench

5/32 allen wrench

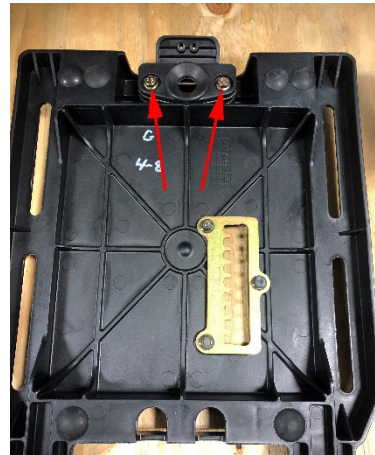
Step 1: Remove the factory seat base by removing the (4) torx bolts.



Step 2: Remove the (6) rubber bumpers/isolators from the stock seat base.



Step 3: Remove the latch assembly by removing the (2) bolts with the 10mm socket or wrench.



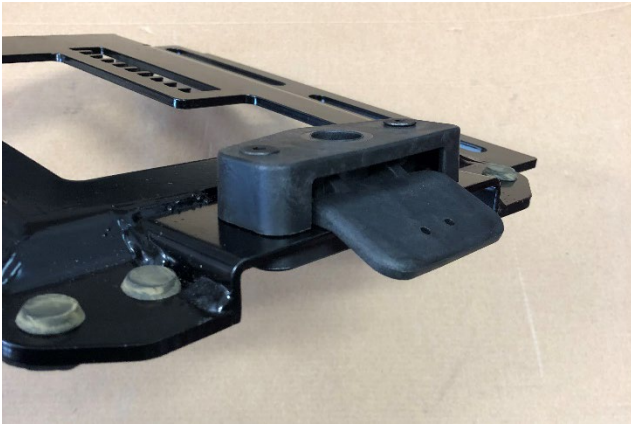
Step 4: Insert the (6) factory rubber bumpers into the (6) 1/2" holes in the new seat base.

Step 5: Assemble the latch handle with the latch spring in the new latch housing. **DO NOT USE THE SILVER PLATE!**

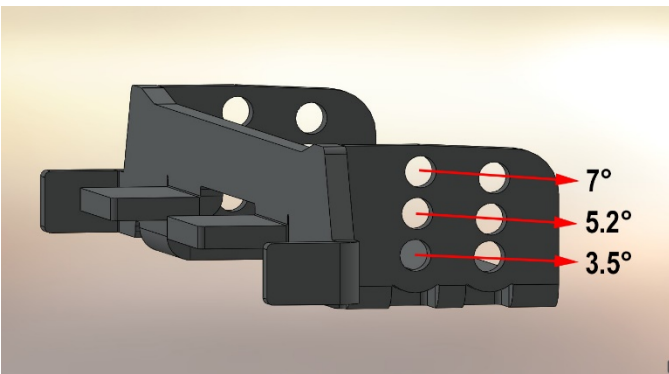


ROCK READY UTV

Step 6: Attach the latch housing from step 5 **ON TOP** of the seat base and the factory bottom plastic piece to the bottom side of the seat base with the supplied (2) flat top 1/4-20 allen bolts. DO NOT tighten the nuts, only snug them.



Step 7: Attach the front part of the seat base to the main part of the seat base with the supplied (4) carriage bolts and nylock nuts. Insert the carriage bolts from the inside into the square hole so they point outward. The bottom set of holes are for the 3.5° setting, the middle holes are for the 5.2° setting, and the top holes are for the 7° setting.



Step 8: Test fit the seat base in the RZR. If you only snugged the nuts and bolts from step 4 then you should be able to adjust the latch forward and back. This is necessary due to variations of the front seat bar on the RZR frame being different from machine to machine. Once adjusted, tighten the 1/4-20 nylock nuts and bolts. If the 15mm bolt head in the frame near the latch is hitting the plastic too much you can trim it some with a razor blade. If the seat base is too tight under the front bar you can loosen the (4) carriage bolts that hold the

two parts of the seat base together then retighten them.



Step 9: Attach the new seat base to the seat with the (4) factory torx bolts removed in step 1. Reinstall the seat and get to riding!

